

DUNE

B2415-TBK

A minimalist, integrated LED fixture creates a vista of illumination in the architectural Dune sconce. A slender beam of light emanates from between two bent flanges of metal on this modern fixture. Dune is available in two sizes, both in a Textured Black finish.

FINISHES

TEXTURE BLACK

Coastal Suitable Finish (EPM): No

DIMENSIONS

Height: 15"

Width/Diameter: 6"

Canopy/Backplate: 5.25"

Product Weight: 4.27lb

Extension: 3.25"

Top to Center: 7.5"

Canopy/Backplate Shape: Rectangle

Sloped Ceiling Compatible: No

Living Finish: No

Uplight Only: No

Shade

Shade 1: Acrylic

Shade 1 Finish: White

Shade 1 Top Width: 2.25"

Shade 1 Bottom L/W: 0" / 2.25"

Shade 1 Height: 13.5"

ELECTRICAL



Bulb 1

Bulb Included: N/A

Socket: Integrated LED

Max Wattage: 6

Bulb Quantity: 1

Dimmer Type: ELV, TRIAC

Gem Box Required (2"x3"): No

Dark Sky: No

CRI: 90

Color Temp.: 3000k

Lumens: 175

Title 24: No

Field Serviceable: No

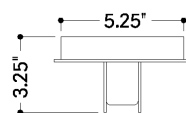
SHIPPING

Carton 1: 18" x 9" x 6"

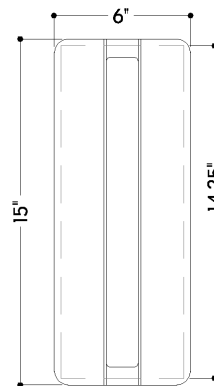
Carton 1 Weight: 6lb

Shipping Method: Ground

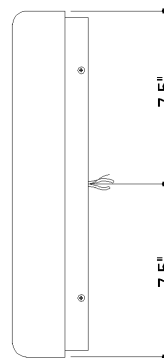
Country of Origin: CN



TOP



FRONT



SIDE

HUDSON VALLEY
LIGHTING GROUP

| hvlgroup.com | 1.800.814.3993